

## GETTING STARTED *(Quick guide)*

### Personal Audio Link

Before you can use your Personal Audio Link it is necessary to:

- Charge your Personal Audio Link
- Pair with your hearing instruments

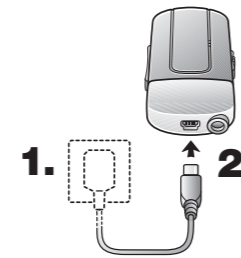
**NOTE!** Check with your hearing healthcare professional to determine if your instruments have been pre-paired. Instruments that have been prepared do not need to be paired again.

### **A** CHARGE YOUR PERSONAL AUDIO LINK

1. Plug one end of the charging cable into the Personal Audio Link.

2. Plug the other end of the charging cable into a power outlet.

3. Generally, charging is complete when the red LED indicator turns solid green interrupted by a red blink every 2 seconds. However, when charging for the first time allow it to charge for at least 3 hours, even if the battery indicator indicates that the battery is fully charged.

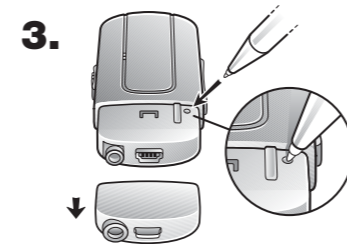


### **B** PAIR WITH YOUR HEARING INSTRUMENTS

1. Turn on your Personal Audio Link by sliding the ON/OFF switch to the ON position.

2. Open the battery doors on both hearing instruments.

3. Remove the cover from the Personal Audio Link. Press the pairing button once to put the Personal Audio Link in pairing mode for 20 seconds.



4. The LED indicator will now blink yellow once every 2 seconds to indicate that it is ready to be paired in channel 1.

5. While in pairing mode close the battery doors on both hearing instruments.

6. Successful pairing will be acknowledged by an audible melody played in both hearing instruments. Replace the cover on the Personal Audio Link once pairing is complete.



### PAIRING THE Personal Audio Link IN CHANNELS 2 OR 3

It is possible to pair up to three Beltone Direct streaming accessories with a given pair of hearing instruments. To pair a Personal Audio Link in channel 2:

- Follow steps 1 and 2 under (B)

- Then press the pairing button of the Personal Audio Link TWO times. The LED indicator will now blink yellow twice every 2 seconds to indicate that it is ready to be paired in channel 2.

- To pair the Personal Audio Link in channel 3, press the pairing button three times. The LED indicator will blink yellow three times every 2 seconds.
- Finish by closing the battery door on both hearing instruments.

### **C** LISTENING TO SOUND FROM YOUR BELTONE DIRECT PERSONAL AUDIO LINK

Turn on the Personal Audio Link and make sure your hearing instruments are turned on. Streaming may be started in one of two ways:

EITHER: Press and hold the push button on both hearing instruments for about 3 seconds;

OR: If you have a Beltone Direct Remote Control (optional), simply press the streaming button.

Once the Personal Audio Link has been connected an

audible melody will play in your hearing instruments. This will be followed by either the sound coming from the Personal Audio Link or the sound coming from a connected auxiliary audio device (See section D).



## LISTENING TO SOUND FROM A SECOND OR THIRD BELTONE DIRECT STREAMING ACCESSORY

If your hearing instruments are paired to more than one streaming accessory, you can start streaming in one of two ways:

EITHER: Press and hold the push button on both hearing instruments for about 3 seconds a 2<sup>nd</sup> or 3<sup>rd</sup> time;

OR: Press the streaming button on the Direct Remote Control a 2<sup>nd</sup> or 3<sup>rd</sup> time.

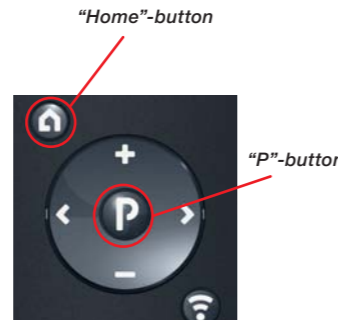


## STOP LISTENING TO A STREAMING PROGRAM

To stop listening to a streaming program and return to the last listening program used:

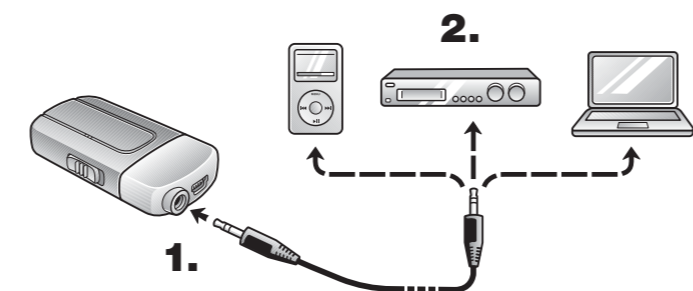
EITHER: Quickly press and release the push button on both hearing instruments;

OR: Press the “P” speak button, located in the center of the Direct Remote Control key pad. You may also press the “Home” button to return to your default settings.



## D USING THE LINE-IN

The Line-in can be used to stream audio signals from most auxiliary audio devices directly to your hearing instruments.



1. Insert the included jack cable into the Line-in plug on the Personal Audio Link.

2. Plug the other end of the jack cable into the AUDIO OUT on the audio device you want to stream from.

## E VOLUME CONTROL - MICROPHONE AND LINE-IN

1. Use the “+” and “-” keys to adjust volume to a comfortable level. Make sure that your hearing instruments are comfortably adjusted before you change the settings with the volume control.



### Tips and Support

For more details on the Beltone Direct Personal Audio Link, refer to the user guide. For further support, tips and videos, go to the Beltone website on [www.beltone-hearing.com](http://www.beltone-hearing.com)

400030000-GB-11.07-Rev.A  
Printed in Denmark  
© Beltone 2011

Beltone A/S  
Lautrupbjerg 7  
DK-2750 Ballerup  
Denmark  
Tel.: +45 45 75 11 11  
Fax: +45 45 75 11 19  
[www.beltone-hearing.com](http://www.beltone-hearing.com)

## Beltone Direct Personal Audio Link Getting started (Quick Guide)



Beltone